



# eHealth Center

Digital health research at the service of people

## Health challenges we face

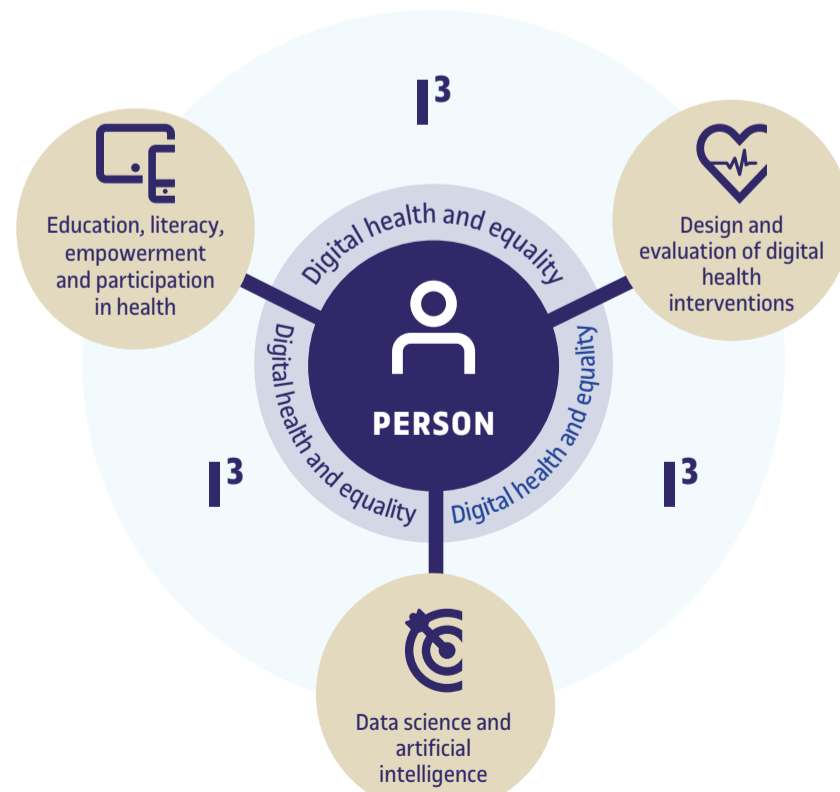
- The unequal distribution of health services and the impact of socio-economic status on health.
- The responsibility to promote everyone's emotional well-being.
- Digital divides and training in digitalization for healthcare professionals.
- The importance of personalization and participation in decision-making on healthcare.
- Epidemics and neglected diseases, as both a local and a global problem.
- The need to rethink ageing in order to make ageing individuals and societies healthier.
- The relationship between human health and planetary health.

## What we do

- Address the **scientific challenges** of digital health and healthcare in the following **research areas**:
  - Education, literacy, empowerment and participation.
  - Data science and artificial intelligence.
  - Design and evaluation of digital health interventions.
- Transfer and exchange knowledge and digital solutions** with key actors in society.
- Empower citizens and health professionals by means of **education, training and co-creation**.
- Raise public **awareness** of key aspects of digital health.

Five years contributing to research and innovation in digital health. Find out [here](#) about the work of the eHealth Center since it was founded.

## The eHealth Center model



I³ = investigation, innovation and impact

We are an academic centre specializing in digital health. We produce, convey and exchange knowledge based on an interdisciplinary approach, in order to promote and improve individual and collective health and well-being, based on scientific evidence.

We investigate how technologies impact health. We look at how digitalization contributes to establishing more robust healthcare systems with better trained professionals.

We believe that individuals should play the leading role in the management of their health. And we

believe that, with the right information, they are able to decide which aspects improve their well-being.

We are seeking partnerships to accelerate the paradigm shift in healthcare. Are you involved in research in digital health, or as a professional, are you interested in promoting healthcare with the help of information and communication technologies?

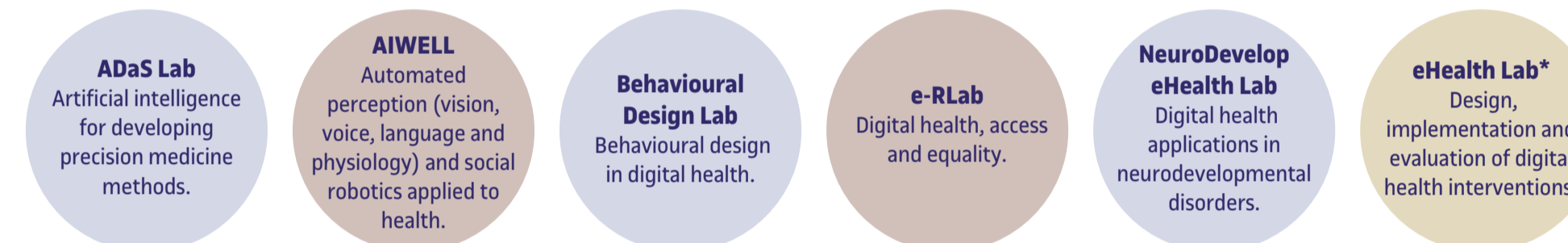
Would you like to work with the eHealth Center?

Contact us!

## An e-health research and innovation ecosystem

The centre is home to six research groups, and provides support for all the e-health research at the university. ([see more](#)).

### 6 groups directly linked to the eHealth Center



> 15 UOC groups with digital health research lines

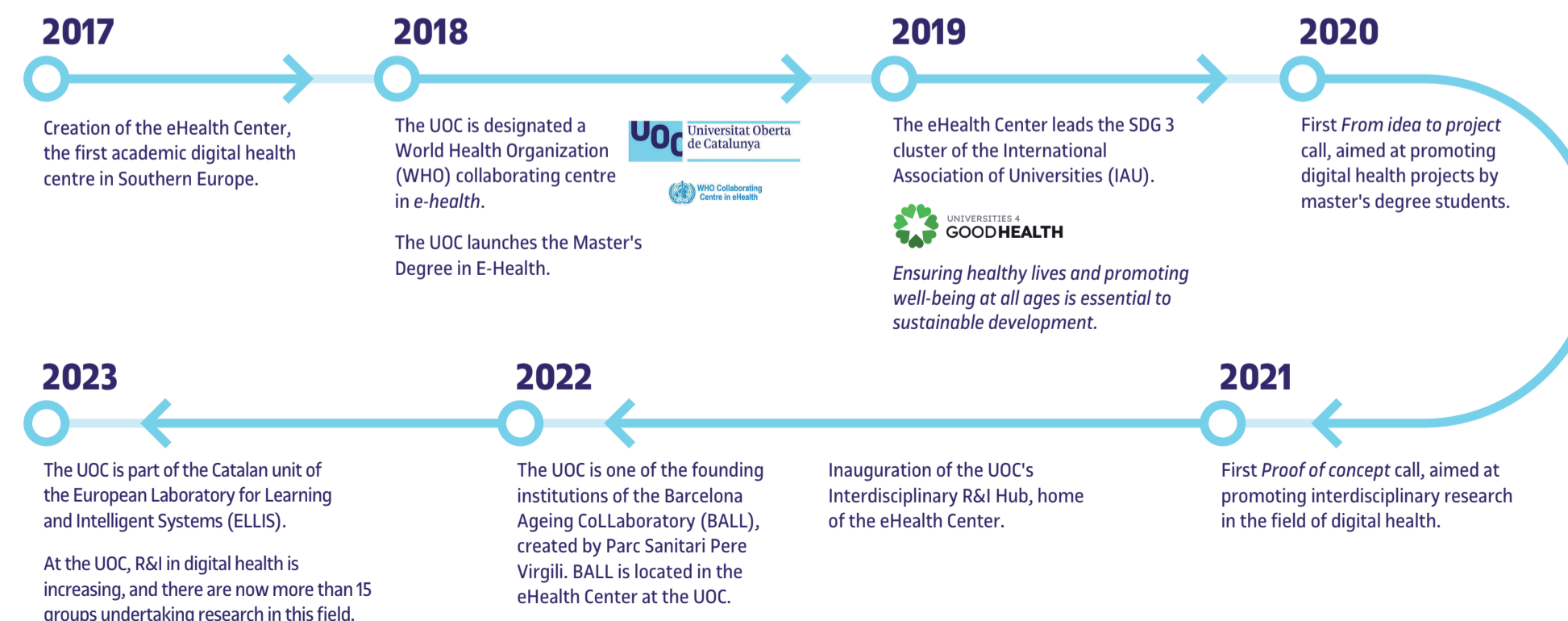
> 40 digital health researchers at the UOC

\* Group of the director of the eHealth Center, affiliated to the UOC's Faculty of Health Sciences.

## 9 Labs University facilities providing a service for digital health research.

UOC Labs	Audiovisual & Sound Lab	Data Science Lab	Design & Maker Lab	NeuroLab
Social, Behavioural and Cognition Lab	Social Networks & Gaming Lab	TechLab	Wireless Networks Lab	XR Lab. Immersive Technologies

## Digital health research at the UOC



eHealth Center  
Interdisciplinary R&I Hub  
C Building, Rambla del Poblenou 154  
08018 Barcelona

ehealthcenter@uoc.edu

- X @eHealthUOC
- X @UOCuniversity
- UOCunivrsitat
- UOC.universitat



## Impact of the eHealth Center

### Training



Launch of the **international postgraduate programme in Digital Health in Argentina** to train health professionals. This postgraduate programme is funded by the Inter-American Development Bank (IDB), and is part of the *Argentina Campus Global* programme of the Argentine Ministry of Education. After the postgraduate programme, a community of practice is established among the professionals who have received training so that they can continue sharing their knowledge.

### Technology transfer



The **Assisted driving for children in the hospital environment** project by the AIWELL research group, in collaboration with researchers from MIT (Massachusetts Institute of Technology), Hospital Sant Joan de Déu, and Hyundai, among other institutions.

### Spaces open to the public



The **eHealth What if Forum** was a series of debates focusing on the challenges of healthcare and the role of technology in improving quality of life. Questions were formulated using the format "What if...?" as a tool to create thought-provoking scenarios.